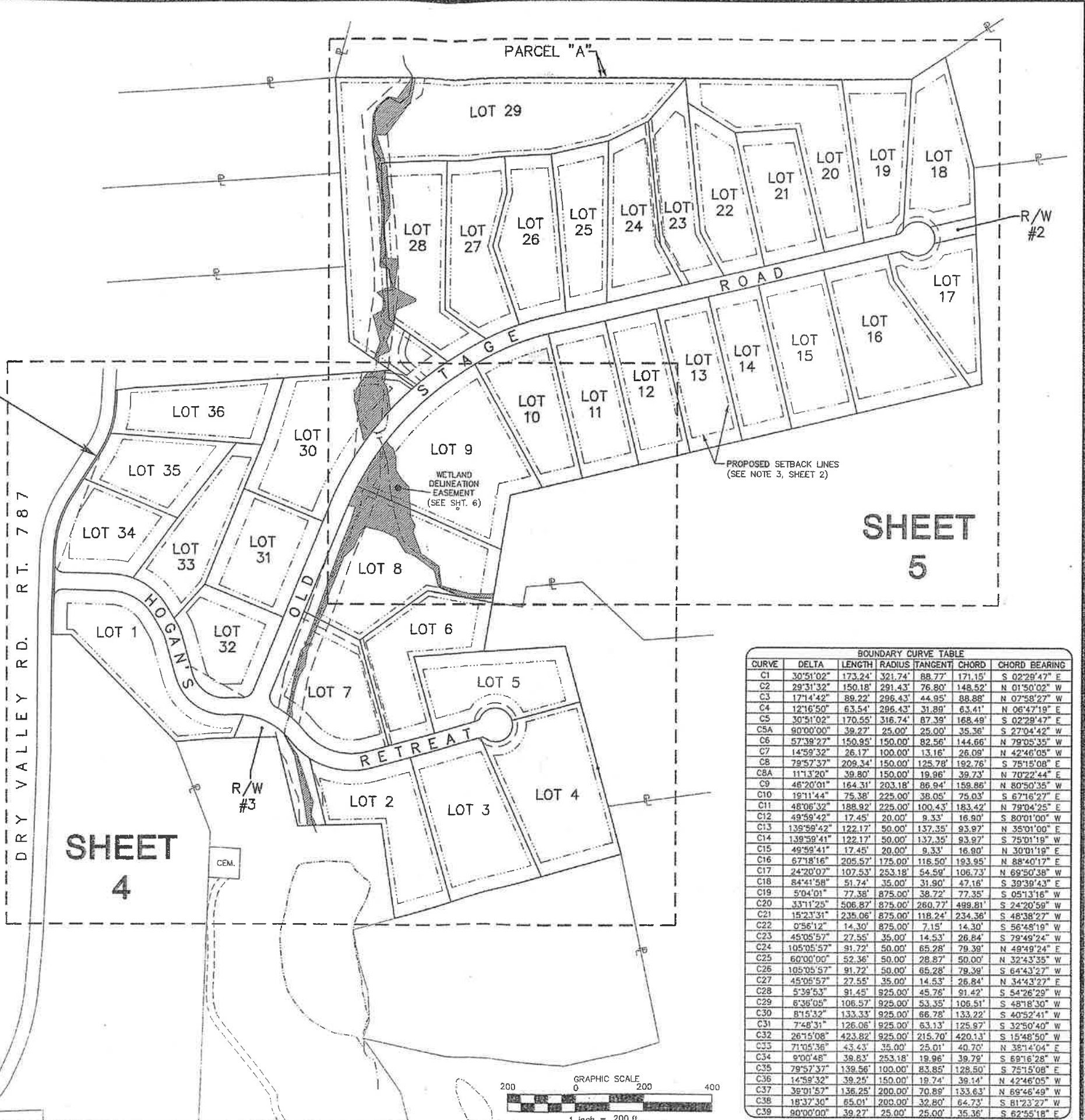




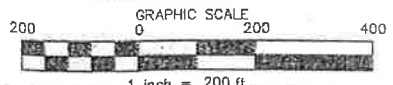
5' R/W DEDICATION

DRY VALLEY RD. RT. 787

LINE	CHORD BEARING	LENGTH
L1	N 19°15'40" W	61.42'
L2	N 17°55'44" W	180.68'
L3	N 12°55'44" E	154.61'
L4	N 16°35'48" W	38.52'
L5(T)	N 62°14'36" E	55.00'
L6	N 74°51'44" W	146.42'
L7	N 37°47'26" E	116.14'
L8	S 09°31'09" E	146.25'
L9	S 54°35'52" W	35.76'
L10	N 27°32'47" W	281.88'
L11(T)	S 66°27'39" W	244.30'
L12	N 33°11'11" W	269.50'
L13(T)	S 70°44'20" W	57.41'
L14	N 19°15'40" W	61.36'
L15	N 17°55'18" W	46.79'
L16	N 17°55'18" W	100.00'
L17	N 17°55'18" W	33.84'
L18	N 12°55'44" E	63.93'
L19	N 12°55'44" E	90.66'
L20	N 16°35'48" W	39.50'
L21	S 50°15'51" E	51.66'
L22	S 35°16'19" E	116.98'
L23	N 57°16'25" E	125.60'
L24	S 57°16'25" W	135.21'
L25	N 35°16'19" W	116.98'
L26	N 50°15'51" W	37.98'
L27	S 66°21'15" W	179.40'
L28	N 26°31'56" W	132.54'
L29	N 02°41'16" E	73.86'



CURVE	DELTA	LENGTH	RADIUS	TANGENT	CHORD	CHORD BEARING
C1	30°51'02"	173.24'	321.74'	88.77'	171.15'	S 02°28'47" E
C2	29°31'32"	150.18'	291.43'	76.80'	148.52'	N 01°50'02" W
C3	17°14'42"	89.22'	296.43'	44.95'	88.88'	N 07°58'27" W
C4	12°16'50"	63.54'	296.43'	31.89'	63.41'	N 06°47'19" E
C5	30°51'02"	170.55'	316.74'	87.39'	168.49'	S 02°28'47" E
C5A	90°00'00"	39.27'	25.00'	25.00'	35.36'	S 27°04'42" W
C6	57°38'27"	150.95'	150.00'	82.56'	144.66'	N 79°05'35" W
C7	14°59'32"	26.17'	100.00'	13.16'	26.09'	N 42°46'05" W
C8	79°57'37"	209.34'	150.00'	125.78'	192.76'	S 75°15'08" E
C8A	11°13'20"	39.80'	150.00'	19.96'	39.73'	N 70°22'44" E
C9	46°20'01"	164.31'	203.18'	86.94'	158.86'	N 80°50'35" W
C10	19°11'44"	75.38'	225.00'	38.05'	75.03'	S 67°16'27" E
C11	48°06'32"	188.92'	225.00'	100.43'	183.42'	N 79°04'25" E
C12	49°58'42"	17.45'	20.00'	9.33'	16.90'	S 80°01'00" W
C13	139°59'42"	122.17'	50.00'	137.35'	93.97'	N 35°01'00" E
C14	139°59'41"	122.17'	50.00'	137.35'	93.97'	S 75°01'19" W
C15	49°58'41"	17.45'	20.00'	9.33'	16.90'	N 30°01'18" E
C16	67°18'16"	205.57'	175.00'	118.50'	193.95'	N 88°40'17" E
C17	24°20'07"	107.53'	253.18'	54.59'	106.73'	N 69°50'38" W
C18	84°41'58"	51.74'	35.00'	31.90'	47.16'	S 39°39'43" E
C19	50°41'01"	77.38'	875.00'	38.72'	77.35'	S 05°13'16" W
C20	33°11'25"	506.87'	875.00'	260.77'	499.81'	S 24°20'59" W
C21	15°23'31"	235.06'	875.00'	118.24'	234.36'	S 48°38'27" W
C22	0°56'12"	14.30'	875.00'	7.15'	14.30'	S 56°45'19" W
C23	45°05'57"	27.55'	35.00'	14.53'	26.84'	S 79°49'24" W
C24	105°05'57"	91.72'	50.00'	65.28'	79.39'	N 49°49'24" E
C25	60°00'00"	52.36'	50.00'	28.87'	50.00'	N 32°43'35" W
C26	105°05'57"	91.72'	50.00'	65.28'	79.39'	S 64°43'27" W
C27	45°05'57"	27.55'	35.00'	14.53'	26.84'	N 34°43'27" E
C28	5°39'53"	91.45'	925.00'	45.76'	91.42'	S 54°26'29" W
C29	6°36'05"	106.57'	925.00'	53.35'	106.51'	S 48°18'30" W
C30	8°15'32"	133.33'	925.00'	66.78'	133.22'	S 40°52'41" W
C31	7°48'31"	126.06'	925.00'	63.13'	125.97'	S 32°50'40" W
C32	26°15'08"	423.82'	925.00'	215.70'	420.13'	S 15°48'50" W
C33	71°05'36"	43.43'	35.00'	25.01'	40.70'	N 38°14'04" E
C34	9°00'48"	38.83'	253.18'	19.96'	39.79'	S 69°16'28" W
C35	79°57'37"	139.56'	100.00'	83.85'	128.50'	S 75°15'08" E
C36	14°59'32"	39.25'	150.00'	19.74'	39.14'	N 42°46'05" W
C37	39°01'57"	136.25'	200.00'	70.89'	133.63'	N 69°46'49" W
C38	18°37'30"	65.01'	200.00'	32.80'	64.73'	S 81°23'27" W
C39	90°00'00"	39.27'	25.00'	25.00'	35.36'	S 62°55'18" E



GAY AND NEEL, INC.
 CIVIL ENGINEERING
 LANDSCAPE ARCHITECTURE
 SURVEYING
 1260 Radford Street
 Christiansburg, Virginia 24073
 Phone: (540) 381-6011 Fax: (540) 381-2773
 Email: info@gayandneel.com

Major Subdivision Plat of
"Hogan's Retreat"
 Prepared for George K. Lucas
 Near Childress Community
 Riner Magisterial District
 Montgomery County, Virginia



REVISED:

DESIGNED/CALC.: *KJD*
 CHECKED: *KJD*
 DRAWN: *KJD*
 SCALE: 1"=200'
 DATE: 05/31/07

JOB NO. 1290.2
 SHEET 3 OF 6

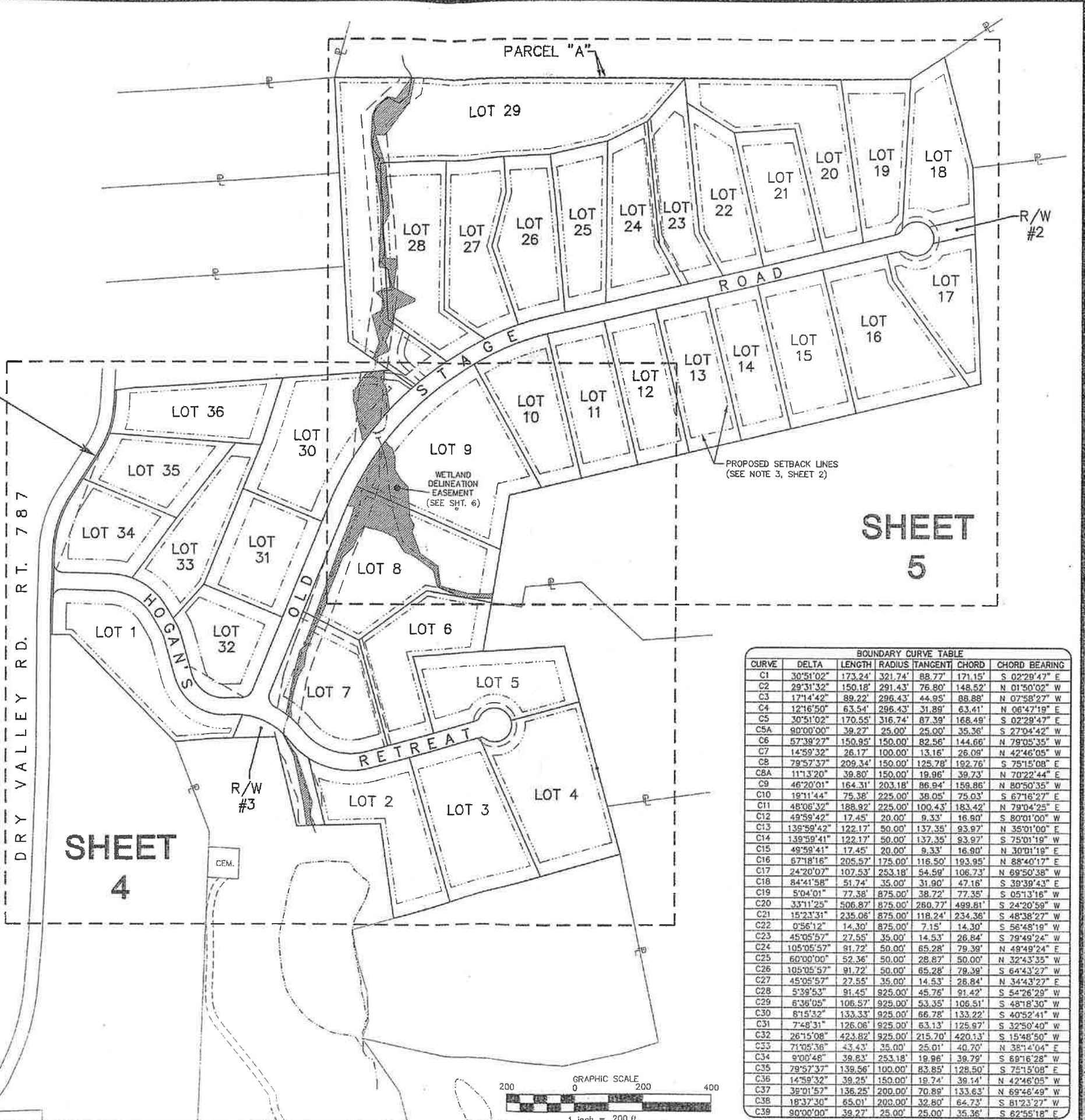
X:\Drawings\1290\Survey Dwg\1290-Subd.dwg, SHT3, 2/15/2008 1:12:42 PM, kjd, DesignJet 500 Surveyors.pc3, 1:1



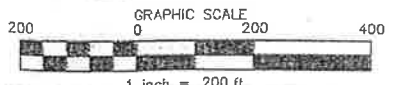
5' R/W DEDICATION

DRY VALLEY RD. RT. 787

LINE	CHORD BEARING	LENGTH
L1	N 19°15'40" W	61.42'
L2	N 17°55'18" W	180.68'
L3	N 12°55'44" E	154.61'
L4	N 16°35'48" W	38.52'
L5(T)	N 62°14'36" E	55.00'
L6	N 74°51'44" W	146.42'
L7	N 37°47'26" E	116.14'
L8	S 09°31'09" E	146.25'
L9	S 54°35'52" W	35.76'
L10	N 27°32'47" W	281.88'
L11(T)	S 66°27'39" W	244.30'
L12	N 33°11'11" W	269.50'
L13(T)	S 70°44'20" W	57.41'
L14	N 19°15'40" W	61.36'
L15	N 17°55'18" W	46.79'
L16	N 12°55'44" E	100.00'
L17	N 17°55'18" W	33.84'
L18	N 12°55'44" E	63.93'
L19	N 12°55'44" E	90.68'
L20	N 16°35'48" W	39.50'
L21	S 50°15'51" E	51.66'
L22	S 35°16'19" E	116.88'
L23	N 57°16'25" E	125.60'
L24	S 57°16'25" W	135.21'
L25	N 35°16'19" W	116.98'
L26	N 50°15'51" W	37.98'
L27	S 66°21'15" W	179.40'
L28	N 26°31'56" W	132.54'
L29	N 02°41'16" E	73.86'



CURVE	DELTA	LENGTH	RADIUS	TANGENT	CHORD	CHORD BEARING
C1	30°51'02"	173.24'	321.74'	88.77'	171.15'	S 02°29'47" E
C2	29°31'32"	150.18'	291.43'	76.80'	148.52'	N 01°50'02" W
C3	17°14'42"	89.22'	296.43'	44.95'	88.68'	N 07°58'27" W
C4	12°16'50"	63.54'	296.43'	31.89'	63.41'	N 06°47'19" E
C5	30°51'02"	170.55'	316.74'	87.39'	168.49'	S 02°29'47" E
C5A	80°00'00"	39.27'	25.00'	25.00'	39.36'	S 27°04'42" W
C6	57°38'27"	150.95'	150.00'	82.56'	144.66'	N 79°05'35" W
C7	14°59'32"	26.17'	100.00'	13.16'	26.09'	N 42°46'05" W
C8	79°57'37"	209.34'	150.00'	125.78'	192.76'	S 75°15'08" E
C8A	11°13'20"	39.80'	150.00'	19.96'	39.73'	N 70°22'44" E
C9	46°20'01"	164.31'	203.18'	86.94'	158.86'	N 80°50'35" W
C10	19°11'44"	75.38'	225.00'	36.05'	75.03'	S 67°16'27" E
C11	48°06'32"	188.92'	225.00'	100.43'	183.42'	N 79°04'25" E
C12	49°59'42"	17.45'	20.00'	9.33'	16.90'	S 80°01'00" W
C13	139°59'42"	122.17'	50.00'	137.35'	93.97'	N 35°01'00" E
C14	139°59'41"	122.17'	50.00'	137.35'	93.97'	S 75°01'19" W
C15	49°59'41"	17.45'	20.00'	9.33'	16.90'	N 30°01'19" E
C16	87°18'16"	205.57'	175.00'	116.50'	193.95'	N 88°40'17" E
C17	24°20'07"	107.53'	253.18'	54.59'	106.73'	N 69°50'38" W
C18	84°41'58"	51.74'	35.00'	31.90'	47.16'	S 39°39'43" E
C19	5°04'01"	77.38'	875.00'	38.72'	77.35'	S 05°13'16" W
C20	33°11'25"	506.87'	875.00'	260.77'	499.81'	S 24°20'59" W
C21	15°23'31"	235.06'	875.00'	118.24'	234.36'	S 48°38'27" W
C22	0°56'12"	14.30'	875.00'	7.15'	14.30'	S 56°48'19" W
C23	45°05'57"	27.55'	35.00'	14.53'	26.84'	S 79°49'24" W
C24	105°05'57"	81.72'	50.00'	85.28'	79.39'	N 49°49'24" E
C25	60°00'00"	52.36'	50.00'	28.87'	50.00'	N 32°43'35" W
C26	105°05'57"	81.72'	50.00'	85.28'	79.39'	S 64°43'27" W
C27	45°05'57"	27.55'	35.00'	14.53'	26.84'	N 34°43'27" E
C28	5°39'53"	91.45'	925.00'	45.76'	91.42'	S 54°26'29" W
C29	6°36'05"	106.57'	925.00'	53.35'	106.51'	S 48°18'30" W
C30	8°15'32"	133.33'	925.00'	66.78'	133.22'	S 40°52'41" W
C31	7°48'31"	126.06'	925.00'	63.13'	125.97'	S 32°50'40" W
C32	26°15'08"	423.82'	925.00'	215.70'	420.13'	S 15°48'50" W
C33	71°05'36"	43.43'	35.00'	25.01'	40.70'	N 38°14'04" E
C34	9°00'48"	39.83'	253.18'	19.96'	39.79'	S 69°16'28" W
C35	79°57'37"	139.56'	100.00'	83.85'	128.50'	S 75°15'08" E
C36	14°59'32"	39.25'	150.00'	19.74'	39.14'	N 42°46'05" W
C37	39°01'57"	136.25'	200.00'	70.89'	133.63'	N 69°46'49" W
C38	18°37'30"	65.01'	200.00'	32.80'	64.73'	S 81°23'27" W
C39	90°00'00"	39.27'	25.00'	25.00'	35.36'	S 62°55'18" E



GAY AND NEEL, INC.
 CIVIL ENGINEERING
 LANDSCAPE ARCHITECTURE
 SURVEYING

1260 Radford Street
 Christiansburg, Virginia 24073
 Phone: (540) 381-6011 Fax: (540) 381-2773
 Email: info@gayandneel.com

Major Subdivision Plat of
"Hogan's Retreat"
 Prepared for George K. Lucas
 Near Childress Community
 Riner Magisterial District
 Montgomery County, Virginia



REVISED:

DESIGNED/CALC.: *KJD*
 CHECKED: *KJD*
 DRAWN: *KJD*
 SCALE: 1"=200'
 DATE: 05/31/07

JOB NO. 1290.2
 SHEET 3 OF 6

X:\Drawings\1290\dwg\Survey Dwg\1290-Subd2.dwg, SHT3, 2/15/2008 1:12:42 PM, kjd, Designjet 500 Surveyors p3, 1:1